



UDP-GlcDH Polyclonal Antibody

Catalog No	YP-Ab-02822
Isotype	IgG
Reactivity	Human;Mouse;Rat
Applications	WB;IHC;IF;ELISA
Gene Name	UGDH
Protein Name	UDP-glucose 6-dehydrogenase
Immunogen	The antiserum was produced against synthesized peptide derived from human UGDH. AA range:391-440
Specificity	UDP-GlcDH Polyclonal Antibody detects endogenous levels of UDP-GlcDH protein.
Formulation	Liquid in PBS containing 50% glycerol, 0.5% BSA and 0.02% sodium azide.
Source	Polyclonal, Rabbit,IgG
Purification	The antibody was affinity-purified from rabbit antiserum by affinity-chromatography using epitope-specific immunogen.
Dilution	WB: 1/500 - 1/2000. IHC: 1/100 - 1/300. ELISA: 1/10000.. IF 1:50-200
Concentration	1 mg/ml
Purity	≥90%
Storage Stability	-20°C/1 year
Synonyms	UGDH; UDP-glucose 6-dehydrogenase; UDP-Glc dehydrogenase; UDP-GlcDH; UDPGDH
Observed Band	55kD
Cell Pathway	nucleus,nucleoplasm,cytosol,extracellular exosome,
Tissue Specificity	Detected in heart, placenta, liver, pancreas, spleen, thymus, prostate, ovary, small intestine and colon (PubMed:9737970). Widely expressed (PubMed:9737970).
Function	catalytic activity:UDP-glucose + 2 NAD(+) + H(2)O = UDP-glucuronate + 2 NADH.,function:Involved in the biosynthesis of glycosaminoglycans; hyaluronan, chondroitin sulfate, and heparan sulfate.,pathway:Nucleotide-sugar biosynthesis; UDP-glucuronic acid biosynthesis; UDP-glucuronic acid from UDP-glucose: step 1/1.,similarity:Belongs to the UDP-glucose/GDP-mannose dehydrogenase family.,subunit:Homohexamer.,
Background	The protein encoded by this gene converts UDP-glucose to UDP-glucuronate and thereby participates in the biosynthesis of glycosaminoglycans such as hyaluronan, chondroitin sulfate, and heparan sulfate. These glycosylated compounds are common components of the extracellular matrix and likely play roles in signal transduction, cell migration, and cancer growth and metastasis. The expression of this gene is up-regulated by transforming growth factor beta and



down-regulated by hypoxia. Alternative splicing results in multiple transcript variants.[provided by RefSeq, May 2010],

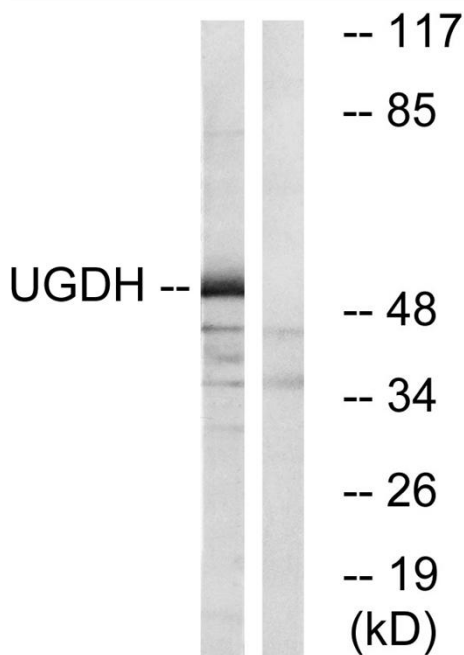
matters needing attention

Avoid repeated freezing and thawing!

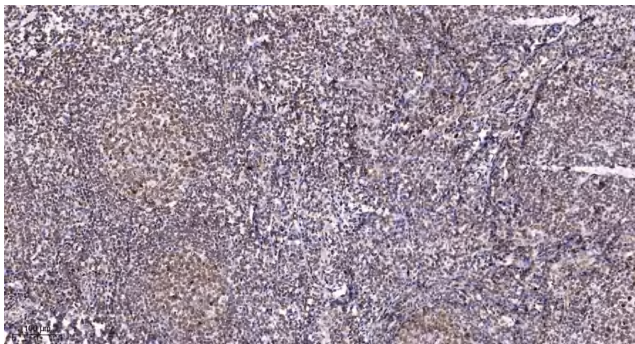
Usage suggestions

This product can be used in immunological reaction related experiments. For more information, please consult technical personnel.

Products Images



Western blot analysis of lysates from COLO cells, using UGDH Antibody. The lane on the right is blocked with the synthesized peptide.



Immunohistochemical analysis of paraffin-embedded human tonsil. 1, Antibody was diluted at 1:200(4° overnight). 2, Tris-EDTA,pH9.0 was used for antigen retrieval. 3,Secondary antibody was diluted at 1:200(room temperature, 45min).